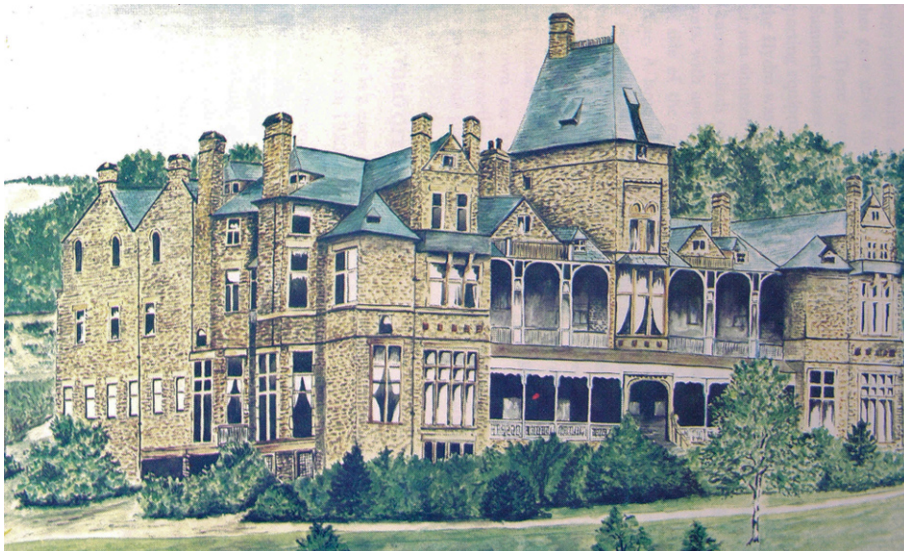


BASLOW

SHOPS AND INNS

The Hydro Hotel

This iconic hotel, built in 1881, was a milestone in the story of Baslow



Summary

The paper is a list of all the shops and inns in the village of Baslow from the early 1800s until about 2000, though it is less complete for the last 50 years. Some other businesses have also been included. An underlying theme is the growth of Baslow as a tourist destination.

Notes

Information has come from a wide variety of sources, including the memories of villagers. The censuses, and Tithe Award of 1848, have been especially useful, making the period 1841 -1911 fairly reliable. Gazetteers and the catalogue for the 1920 Rutland sale have given further information. Further insight is from an article by a late local resident David Cartledge who “walked” the village in the mid 1900s.

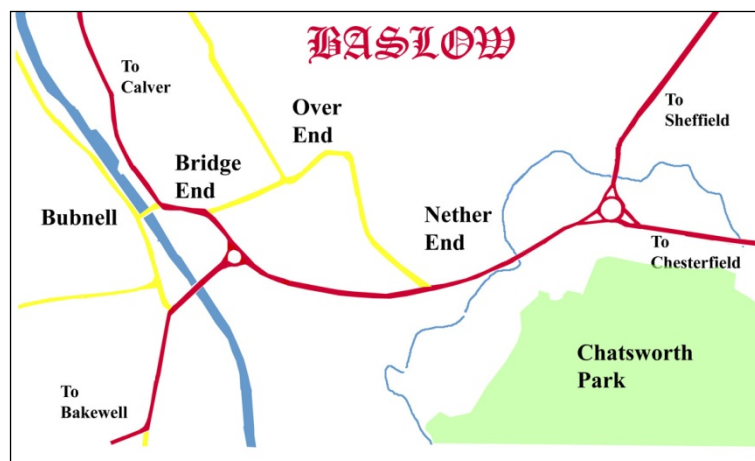
Dates are often not accurate and even when present a shop could have been present for years before and years after

Entries are listed from left to right across the map.

Each entry includes

- A small photo
- Details of its position
- Often a brief history of the location
- The type of shop and the names of the owners or tenants
-

Unless mentioned otherwise, most of the buildings listed in the paper were already present on a local map dated 1799. All will have been renovated or rebuilt since.



n.b. there is a copy of this article on the website www.baslowhistory.co.uk, It is a PDF, so the search tool can be used for names and place

The Village of Baslow

Baslow, including the hamlet of Bubnell, is an agricultural village in the North Derbyshire on the river Derwent, four miles east of Bakewell and immediately to the north of Chatsworth. The population has been more or less than 1000 for the last 200 years.

The village is in the hills of the Peak District, and is close to the long line of “Edges” stretching from Derwent to Matlock. Both have made travelling difficult in the past, especially in winter. However Baslow is in the south of the area where the hills are lower and two side valleys reduce the incline up the Edges. These features made, and still make, the village one of the better routes for long distance travellers, thus contributing to the development of inns and services.

In earlier times Baslow was an important centre for the manufacture of millstones, and there was lead smelting and coal mining. By 1800 these industries had faded out, though some quarrying continued. Significantly, there were no mills or other larger scale industries, which were common elsewhere in the valley. An exception perhaps was the gas works, which arrived in 1864: this was very early for a small village and would have been a major attraction.

By the 1870s and 1880s, the general standard of living in the country was improving, transport was better and ordinary people wanted to travel. Baslow, a beautiful village was close to major towns and had good facilities and communications. This was appreciated by a group of Sheffield businessmen who financed the large Baslow Hydropathic Establishment, a 150 bedded hotel which was completed in 1881.

Baslow was ready for visitors.

The Parts of Baslow

Bubnell is across the river from the main village. It has always been exclusively agricultural, with only one shop close to the bridge.

Bridge End is the core of the village with the church, the bridge and a major share of the shops and craftsmen.

Over End is situated on higher ground, on the line of the old north/south road in the valley. It was similar to Bubnell – mainly agricultural and residential.

Nether End at the eastern side of the village was the traveller and visitor area. It contained the Wheatsheaf, the Royal Hotel and the Devonshire Arms. Nearby were the Peacock (now The Cavendish Hotel) and the Hydro with shops and tearooms for the visitors.

Notes. Over the last 50 years the village has become more residential with fewer local facilities. These comments were more relevant 100 years ago.

Bubnell

Bridgefoot Farm



*It is close to the old bridge on the west or Bubnell side of the river
SK 25077235.*

In the early 1800s it was an Inn "The Joiners Arms" run by Joseph Marples. After he died it was occupied by William Tomlinson a grazier from Heath. He soon became a butcher

Butcher. William Tomlinson was recorded as a butcher in the 1841 census, and as a Butcher and Farmer in 1851. Five generations of William Tomlinson occupied the farm. The shop closed in 1916 and the farm in the 1980s.

Bridge Cottage



*The cottage is in Bubnell Lane next door to Bridgefoot farm. (In fact it is in Baslow not Bubnell)
SK25087233*

Grocer. Abraham Redfearne and then his widow were recorded as grocers in the censuses of 1851 to 1881.

General Store. A subsequent resident (Adelaide Alsop) wrote that it was "a three story thatched cottage housing a General Store kept by "Granny Marples", up to 1903 when it was renovated".

Bridge End

Historical Note

In 1827 the churchyard was enlarged. This involved the destruction of a farmhouse near the bridge belonging to the White family, and several other houses. Joseph White moved across the road to Church Farm when he later traded as a grocer as well as farming. Corner Cottage in School Lane was built for John White a butcher.

James Marples the blacksmith had to move with his smithy. He and several other craftsmen were rehoused in new buildings in Calver Road (now the Old Forge and adjacent cottages): an early industrial estate!

The Rutland Arms



*Calver Road. Close to the old bridge on the Baslow side of the river
SK 25127240*

It is known to be present in 1829 but could well be much older. Originally it was called "The Green Man" but was renamed when it was renovated in the 1880s

Baslow Mill



Calver Road 100yds north of Rutland Arms

SK25057247

Baslow Shops & Inns

Page 5 of 19

The origin of the mill is not known but probably dates back to mediaeval times. It was run by the Hodgekinson family for much of the 1800s and early 1900s

Baker. Mr Hodgkinson started a bakery at the Mill in the 1870s, which continued until the Mill closed in the 1920s. Mr Sabey (b1851) was assistant Baker from 1891. In 1920 the oven has a capacity 150 loaves when Mr Goodwin was head Baker. It also sold groceries in 1901

The Old Forge



Calver Road. On the left (east) side of Calver Road, beyond the Old Post Office SK251 27244

Probably built about 1830. It remained in use until the mid 1900s. Most of the blacksmiths belonged to the Marples family. The last was Bill Derbyshire,.

Japonica Cottage



Calver Road, between the Forge and Jasmine Cottage.

SK251 27244

Originally two houses, it was converted to one about 1861

1 Carpenter. Charles Cooper is listed in 1851 and 1851 censuses

2 Plumber and Glazier George Merrill ran the business until 1881. His widowed daughter, Elizabeth Capper was still keeping shop there in 1891: her brother a Hawker lived with her.

Plumber & Hardware Hubert Sheldon in the 1930s.

Jasmine Cottage



Calver Road. The end house of the terrace opposite the Rutland Arms Car Park. SK 2512 7244

Part of the block built in 1830. The outhouse just visible in the photo behind the main building was the slaughter house

Carpenter. It was the house of Charles Cooper, a carpenter in 1841, 1851

Butcher. By 1861 William Tomlinson, son of the farmer at Bridgefoot Farm, had started a Butcher shop, presumably as a retail outlet for his father. Unfortunately he died of an accident in 1866, and the shop passed to a relative, (another) William Tomlinson from Rowsley. The shop closed in the early 1900s

Painter & Decorator. Mr Hobbs had his shop there in the 1930s

White Lodge



On Calver Road, at White Lodge Lane

SK 25047259

It was originally a tannery, situated well outside the early village. The tanner lived in the house, the works in the buildings behind it.

Tannery. Its origin is not known. It was under the care of the Cawton family until the death of Charles Cawton in the 1860s

Carpenter. It was then occupied by Samuel Hibberd who had lived in Church Street but had to leave when the Church yard was extended in 1876. He was followed by Joseph Staley in the early 1900s,

Builder. It was then bought by out by Harold Cartledge a builder in 1920.

Church Street

Note. Three of the early houses in Church Street are all now part of the shop Avant Garde. For the purposes of this paper only I have used older names. The corner shop opposite the Rutland arms is "The Old Post Office", next Door is "The Old Bank", and the large building opposite the church drive is "Shamans".

The Old Post Office



Across the main road from the Rutland Arms

SK2515 7240

Originally a farmhouse, possible the original home of the Marples family.
Rebuilt built in the mid1800s.

Draper and Post Office. The first reference is in Glover's directory of 1829 when John Stroyan is listed as a draper. It was also the post office from 1846 - his wife Isabella (nee Marples) was postmistress. The family left and business ceased some time before 1911, when the Post Office moved to "Sharmans".

Greengrocers and Fishmongers. George Taylor and his son William moved their greengrocer business from Gorse Bank Cottage into the building. William Taylor was succeeded by his son Arthur, who carried on until his death in 1957.

Post Office. His widow Kathleen brought back the post office to the shop in 1957. She phased out the groceries and sold stationary. She retired in the early 1970s.

Later it was briefly a pharmacy, then a wine shop. It is now part of the decorating & furnishing shop "Avant Garde".

The Old Bank



Next to Old Post Office, with bay window

SK2516 7240

Originally out-buildings of the farm next door ("The Old Post Office"). They were rebuilt in the 1870s

Bank It opened about 1880 as a branch of William Deacon's bank (which was later taken over by Williams and Glynn's). After years of part time opening the branch eventually closed in the 1970s.

Later. For a while it was a business agency and a wine shop before becoming part of "Avant Garde"

The Café



Between the "Old Bank" and "Sharman's"

SK 2517 7240

Originally out buildings of "The Old Post Office" they were rebuilt in the 1870s. Its early use is uncertain.

Café From about 1930 to 1950 it was a high class tearoom presided over by Miss Baggs. Tea was always two scones and a slice of lemon cake. Walkers in boots were sent elsewhere.

Post Office In the late 1960s Mrs Fletcher opened a stationary shop, and took over the post office with her daughter Cynthia Morton as postmistress.

Café When she retired it became the Barn Café, then the Garden Café and is now Charlie's Bistro.

Sharman's



The large 3 storey building opposite the drive to the Church

SK 2518 7240

Originally a saddlery belonging to a member of the Marples family, it was rebuilt in the 1870s

Saddlery In the early 1800s it was a saddlery run by Mathew Marples. The present building was built after his death in the 1870s

Shop The first shop on the new site was called Strines. Little is known about it

General Store Some time in the late 1800s or early 1900s Mary Coates and her son Arthur known as "Pinny" took over the shop, transferring their original Chemist and Druggist business from Corner Cottage (see below). They added a grocery department, and perhaps later the drapery and post office from "The Old Post Office".

On Arthur Coates's death in 1952 the business was taken over by Arthur Taylor, the greengrocer and fishmonger from "The Old Post Office". He ran the two shops until he died in 1957.

Grocer Sharman's the grocers moved into these large premises in 1957 from their small shop in Church Farm with Mr Harry Shepherd as the first manager. They kept the Post Office for only a few months. (see "The Old Post Office"). Trade dwindled and it closed in the late 1970s.

Later it became the second hand shop Labels and now is a further extension of "Avant Garde"

Church Cottage



Opposite the drive into churchyard

SK2518 7239

The part on the left was present in 1799, and may have been the village smithy. The right half, now the shop, was added after 1827

Baslow Shops & Inns

Page 8 of 19

Smithy run by James Marples and his cousin Joseph Brushfield. The smithy moved to Calver Road after 1827. Brushfield stayed on in the cottage.

Tailor. The property (or rather the tenancy) was inherited by Thomas Marples, the nephew of Joseph Brushfield. In 1881 his wife Eliza is described as a Grocer: she could have been supplementing the family income as her husband was 66 that year. There are subsequent references in the Gazetteers to this house being a Tailor and a Grocer. In the Rutland Sale of 1920 it was described as “formerly a grocers shop” and had “potential value for rebuilding as shop”.

Butcher After 1920 it was converted to a butchers shop, first under Mr Kelsey then Mr Ludlam and finally Mr Bennett

Post Office In the 1980s it became the village post office run by Peter Smith. When he retired Mr & Mrs Holmes took over starting the toy shop “5 Little Ducks”. Later the Post Office moved to the present village shop.

Art Gallery



On the right of the entrance to Church Farm

SK 25197239

Note. This is and always has been part of Church Farm but was sublet as a shop for most of the 1900s

Baker. Mr Albert Wyer worked here as a baker for many years. He was followed in the 1950s by the Misses Hargreaves, who are remembered for their cakes.

Dental Surgery. Norman Tomlinson bought the farm next door and converted the shop into his dental Surgery.

Art Gallery He retired from dentistry and now uses it as an art gallery

Church Farm (shop)



Shop to right of farm entrance

SK 25231739

Built in the early 1800s it was extended after 1827 to become the home of the White family.

In the Rutland sale of 1920, the two downstairs rooms facing the road were sold separately from the farm to become a retail premises

The rest of the house remains a private residence.

Grocer. The Whites had been grocers as well as farmers since at least 1835 when Joseph White was a “grocer and dealer in sundries” (Pigot 1835). The Grocery business continued until nearly 1920, when Mrs Alice White was selling sweets and pop from the front room of her farm house.

Grocer The shop was bought by Sharman’s the grocers (their main business was in Sheffield) and managed by Harry Shepherd. In 1957 the business transferred to “Sharman’s”, the large building described above.

Hardware Store Harry Shepherd stayed in situ, running it as a hardware store until he retired in the 1970s

Later There has been a succession of businesses, ranging from delicatessen to antiques.

No 3 Church Terrace



Part of the block of houses next to Church Farm. SK 25251739

News Agency was started in the mid 1900s by Mrs Chapman (remarried after death of 1st husband Mr Bufton) and then inherited by her daughter Ethel Bufton. Ethel ran the agency until she died in the 1980s, surrounded by tons of unsold newspapers.

No 4 School Lane



The last of the terraced houses

SK 25277238

SK 25271739

Sweet shop Mrs Holroyd

Hairdresser. Since then the premises have been used for hairdressing. Initially it was owned by Miss Hilda Sheldon and her sister.

Corner Cottage



The corner house between School Lane and Church Lane

SK25297237

Built after 1827 it was first occupied by John White, probably displaced, like Joseph White of Church Farm, when the churchyard was enlarged

Butcher In 1841 occupied by John White, butcher (who later became landlord of the Devonshire Arms.)

Chemist and Druggist Alfred Coates, son of the vicar of Chelmorton, trained in Bakewell and started his business in Corner Cottage in 1848. He left in 1861 to be succeeded by his brother George who was a grocer as well as a druggist. Later the business passed to his widow then to his son Arthur, also known as "Pinny". About 1910 the business moved across the road to "Sharmans". The family continued to live in the Corner Cottage.

The Prince of Wales



The restaurant near roundabout, alongside burial ground SK 25267233

Records date back to 1709. There was barn next to the road, then a cottage and, nearest to the church, a carpenter's workshop. The carpentry (then shoe making) continued into the late 1800s.

The barn was upgraded to a house & shop in the early 1800s

Grocer & Butcher (in the ex barn) Samuel Bufton was a grocer in 1841 & 1851. He lived with his daughter and son in law James Hearnshaw a butcher. James may

have worked in the shop before moving to Radcliffe House, newly built in Nether End in 1861.

Prince of Wales Hotel. James Hawley acquired the shop in 1861, and converted it to the Prince of Wales hotel, a well known landmark in the village for the next 100 years.

Rowleys. Now a high quality restaurant

OVER END

Over End Cottage



*At the Junction of Schol Lane and Over Road Opposite the telephone exchange)
SK 25477244*

Sweet Shop Mrs Fenton is well remembered in the 1930s, probably because she had the “tuck shop” next door to the school.

Sycamore Cottage



*The house is below the telephone excahne and the Old Chapel
SK 25497248*

Small Shop. Miss A J Clark (b1875) had lived in part of the cottage for many years. In the 1930s her successful family set her up with a small shop to provide her with income and occupation.

The Alma



*Daisy Bank – This short lane leads up from the Alma to Over Lane and the village shop.
SK25487249*

Built in 1854 – the year of the battle in the Crimea. It was a freehold property

Beer House It is listed in the Census returns to 1911 as a Beerhouse and Inn, under Ralph Geeson then Charles Fowler followed by his widow Ellen. There are rumours that it was as near as Baslow got to a house of disrepute.

Greystone Cottage



Daisy Bank – top of Daisy Bank

SK25487250

Grocer Miss Elizabeth Cocker lived here with her brother a cordwainer. She ran a

grocer's shop from 1841 to 1861. It may have continued as a grocer under Arthur Geeson in 1891 (son of Ralph Geeson above)

Village Shop (Matlock House)

At the top of School Lane

SK 25547253



The original house



The modern shop extension

Grocer in the 1901 Census Francis Knifeton is recorded as a grocer. He is remembered as living in this house at a later date but not as a grocer, so the shop must have been temporary.

Shop In 1920 the tenant was Oswald Wilde. After his death his widow Annie married Harry Hawley and they started a sweets and tobacco outlet in the front room of their house.

Grocer Harry Hawley died in 1943 and Annie in 1956. Their son Laurie inherited the shop and built it into a thriving grocery, extending it twice and making it the leading grocer in the village. After his death his widow Margaret ran it until she retired in 2003. It is now the village SPAR shop owned by Mrs Upton and has recently become the Post Office.

Rose Hill Barn



Converted barn opposite side entrance to village shop

SK

Archaeologists suggest that this had once been used as stable for pack house, if so Rose Hill itself could have been an Inn. There is no other evidence to support this.

Nailstone Cottage



Over End, above the village shop. A prominent cottage facing down school lane

SK25757253

Baker Mary Windle is described as a shopkeeper in 1895, and as a baker in the 1901 Census

Victoria Cottage



Over End One of a row on houses facing Eaton Hill. It is next to the letter box

SK 25607253

Cobbler Mr Percy Brightmore lived and worked in the east part of Victoria Cottage in the mid 1900s

Selbourne Cottage



On Bar Road just beyond Gorse Bank Lane

SK 25687256

Cobbler in the mid 1900s, Jack Hawksworth repaired shoes in the shed which still exists as an outhouse to Selbourne Cottage

Gorse Bank Cottage



Gorse Bank Lane. The 2nd to last house on the left.

SK 25657270

Greengrocer. In 1901 George Taylor and his son William were greengrocers at Gorse Bank Cottage. By 1910 they had moved to the Old Post Office

The Baslow Hydropathic Establishment



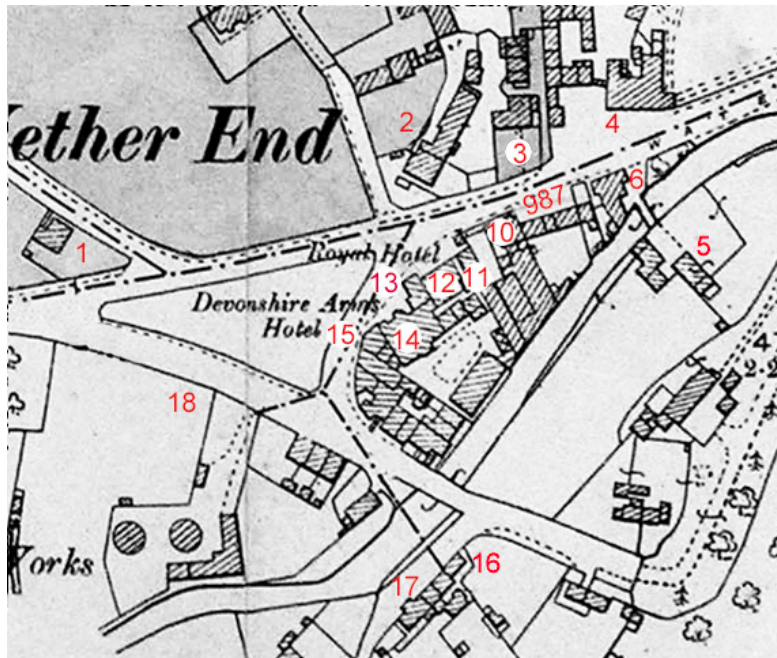
The hotel and grounds occupied all to the present Eaton Drive

SK 25727249

This large, ornate 150 bed hotel opened in 1881. Unfortunately it fell into disrepair and had to be pulled down in 1936

Nether End

Nether End in 1920



- 1 Italian Restaurant
- 2 The Farm
- 3 Ivy House
- 4 Wheatsheaf inn
- 5 Bakery
- 6 "Whitneys"
- 7 Cobbler
- 8 Fish & Game Shop
- 9 Cafe
- 10 Radcliffe House
- 11 Garage
- 12 The Royal Hotel
- 13 "The Shop"
- 14 Devonshire Arms
- 15 Café on Green
- 16 No1 Park Lane
- 17 Thatched Cottage
- 18 Little Shop

Cavendish Hotel, previously Peacock Inn

On Church Lane, between Nether End and Bridge End

SK 25687215



A Coaching Inn. John Marsden was publican of the Peacock when he died in 1730

Italian Restaurant (1)

At the bottom of Eaton Hill, and just opposite the Village Hall

SK25937219



The restaurant building is only 50 years old. The adjoining cottages on Eaton Hill are very much older

Sweets & Newsagent Miss Faulkes

Café & Newsagent Mr & Mrs Burt Weir (who moved here from Church Street)

Restaurant A French Restaurant, then from about 1992 "Il Nino" an Italian restaurant.

The Farm (2)

Across the main road from the Devonshire Arms

SK 25907221



Baslow Shops & Inns

Page 14 of 19

A farmhouse run by the Hearnshaw family until the 1980s. Now private residences.

Tea Rooms. In the mid 1900s the farmer's mother and sisters ran a tearoom on the premises.

Ivy House (3)



Next door to the Wheatsheaf

SK25937223

The Strutt family occupied the house from the 1860s till the 1980s. The census records it as a lodging house in the 1881

Refreshment Rooms They were initially "refreshment rooms" first mentioned in the 1881 census. Later it was a Café" until the family left in the 1980s.

Antique Shop Mr Beedham converted it to an antique shop.

Pottery It is now Ivy House Antiques

Wheatsheaf Hotel (4)



The last building on the left when leaving the village

SK 25967223

One of the two coaching inns in the village, dating back a many years. It must have been present when the first turnpike arrived in 1759.

Baker Robert Rowland Publican of the Wheatsheaf and his son Harry are recorded as bakers and confectioners in 1891 (see "Whitneys" below)

The Old Bakehouse (5)



The last house on the right, reached by crossing a small bridge over the Barbrook SK25997218

Built about 1880 as a bakery. For years there was a close association with the Wheatsheaf Hotel.

Bakery. It supplied the Wheatsheaf Hotel, and the public until the mid 1900s.

“Whitney’s” (6)



last house on right leaving village

SK 25957220

The name has changed frequently so for convenience I have called it “Whitneys”

Small Shop In 1851 occupied by Mary Sheldon, described as a “Petty Grocer”. Subsequently it may have remained a shop, perhaps with connections to The Wheatsheaf, the bakery and a Sheldon family.

Grocer & Baker In the 1901 Roger Sheldon was Grocer and Baker. He was followed by Mr Willis, who was the last person to bake bread in Baslow.

Mr Whitney married Mr Willis’s daughter and inherited the shop. He died in 1977 to be followed by his assistant, Mr Alf Sherratt. The grocers shop finally closed a decade later.

Other Since then it has been a printing works, a florist, a bridal shop and now again a florist.

There had been 4 houses between “Whitney’s” and Radcliffe House. The first (next to “Whitney’s”) was the house of the owner. Then in order

Barbrook House (7,8 & 9)



The row opposite the Wheatsheaf, now a single house.

SK 25947219

Cobbler Mr. Kemp in the mid 1900s

Fish & Game Frank Taylor in the mid 1900s

Grocer Mr. Jefferson in the mid 1900s: he had the Post Office in the 1940s. Then for years it was a Café

Radcliffe House (10)



On the corner opposite the Wheatsheaf

SK 25927219

Built at the same time as the new Devonshire Arms. Note the date on the house 1861 and the name I White, the man who rebuilt the Inn and became its first publican.

Butcher James Hearnshaw, (his first shop was at Bridge End) was the first tenant of this new building. He was succeeded by his son William H Hearnshaw, who ran it until it closed in late 1940s.

Gift Shop

Ladies Clothing "Izzy's" from about 1990

The Garage (11) - no longer exists



In the gap between "The Shop" & Radcliffe House

SK25917219

In the early 1900s the Wheatsheaf had a large garage on this site. It was demolished in the mid 1900s, leaving a petrol station which eventually closed about 1990. The one storied structure visible in the photo is all that remains

Petrol Station run by Joe Fletcher who had been the mechanic based at the Wheatsheaf. It closed in the 1980s though the building remains. Recently it has become an extension to Izzy's

The Royal Hotel (12) – no longer exists



If still present it would block the entrance to the Devonshire Arms car park

SK 25917218

The hotel started in the early 1800s as a Beerhouse called "The Travellers Rest". No doubt due to the demand for hotel beds, it was rebuilt and upgraded to be "The Royal Hotel" about 1880. It was demolished in the mid 1900s

"The Shop"(13) – no longer exists



Near the entrance porch of the present Devonshire Arms

SK 25917219

A three story building squeezed in between the Royal Hotel and the Devonshire Arms. It was demolished in the mid 1900s. The Saddlery was reached by stone steps at the side of the building.

Grocer 1871 to 1891 Thomas Wilson.

Gift Shop The photograph shows that T Ellis sold Fancy Goods and Confectionary (date uncertain)

Greengrocer Mrs Dolby. In the evening it was a fish and chip shop

Gift shop and Antiques This was the first shop owned by Mrs Chappell, see Café on the Green in the mid 1900s

Saddlery (upstairs). Edwin Goodlad arrived in Baslow as an apprentice saddler. In the late 1800s he set up in the loft of "The Shop" .

The Devonshire Arms (14)



Nether End, between the central area, Goose Green, and the Barbrook. SK 25907156

The first building on the site was the Barrel Inn, built about 1800. It was rebuilt in 1861 and re named the Devonshire Arms. There were major modifications again in 1960

Café on the Green (15)



next door to the Devonshire Arms SK 25897215

It was built about 1860 and has been commercial premises ever since.

Grocer. Joseph Stewart and then his widow had a grocer's shop in this area in 1851 and 1861

Grocer Sarah Jane White, a widow in 1871 and 1881

Grocer Elizabeth Marples wife of John Marples from the Millwright family of School Lane. 1891

Grocer Thomas Ellis in 1901. His daughter next door had a Chip shop next door.

Bicycle Shop Mr Stafford

Antiques Shop Mrs Chappell in the 1960s and 1970s

Café now The Café on the Green

No 1 Park Lane (16)



The first house after crossing across the Barbrook bridge on the way to Chatsworth SK 25927210

It was the first recorded shop in the village.

Shop There was a shop here in 1823, 1831 and 1857 run by William Daniels, his widow and then his son. Later It was briefly a boarding.

Thatched Cottage (16)



Park Lane, on the way to Chatsworth SK 25917209

It is strategically placed on the footpath to Chatsworth. It one of the two houses in the village still with a thatched roof.

Shop James Elliot was a storekeeper in 1891

Tearooms Miss Elliott James' daughter converted it into a tearoom in the early 1900s. It soon became a well known, attracting visitors from far and wide. Her speciality was potato scones. She also kept a distinctive type of cat whose fluff was

Baslow Shops & Inns

Page 18 of 19

the same colour as the scones - confusing for the guests. Later it became a small shop selling sweets to passers by before closing in the late 1930s.

Little Shop (18)



Nether End, at entrance to the car park

SK 25847213

Gents Hairdresser Mr Eric Beardall (in the 1930s)

Sweets & Refreshments It became a small shop run first by Hawley (the grocer at Over End) and is now renamed "Sweet Gene" after the present owner

The Gas Works - no longer exists



Nether End at the rear of the car park. The stone gateposts still exist on the main road next to the little shop

SK 25837214

The Gas works were built in 1864, and closed down after the second world war. The site together with some old allotments was taken over by the council for the present public car park. The present lamppost was originally for a gas light.

The East Moors

Toll Bar Cottage, Cupola



On left ½ mile up Sheffield Road

SK 2679 7325

The first main road to Sheffield was the 1803 turnpike. The toll house was the small building on the left. The original door and windows were been built up when the house was enlarged.

Refreshments Miss Woodiwiss provided refreshments, especially to cyclists, in the mid 1900s.

Robin Hood Inn



Over a mile from Baslow on the road to Chesterfield

SK 27997214

It is listed in the 1841 Census records. It is not known when it started or how it got its name. Strategically placed on a main route over the moors, it could have been present for generations

Parkgate Farm



Situated high above Chatsworth near the lakes

SK 27127120

Before the turnpike era the Baslow to Ashover road and the Chatsworth to Sheffield road crossed at Parkgate.

Folklore says that there was an inn at Parkgate called "The Horns Inn". Licensing Records confirm that it had been given a licence in 1761. It must have closed as an Inn after this date when the 1759 turnpike provided a better

way over the moors